

The First floor offers a wide array of spaces that support easily accessible office space, creative light manufacturing, gallery, broadcasting, health and wellness, and food retail including an eatery, coffee shop, or brewery.

Shared Kitchen Incubator

The Shared Use Commercial Kitchen at The Packing House will empower local food entrepreneurs to grow their businesses in a supportive, lower-risk environment. The licensed and insured facility, the first of its kind in Cambridge, will feature commercial grade kitchen equipment, dry storage, cold storage, and food preparation areas. It will be designed for maximum flexibility to drive value for local food entrepreneurs and businesses at all stages of development.

Fresh Food Market

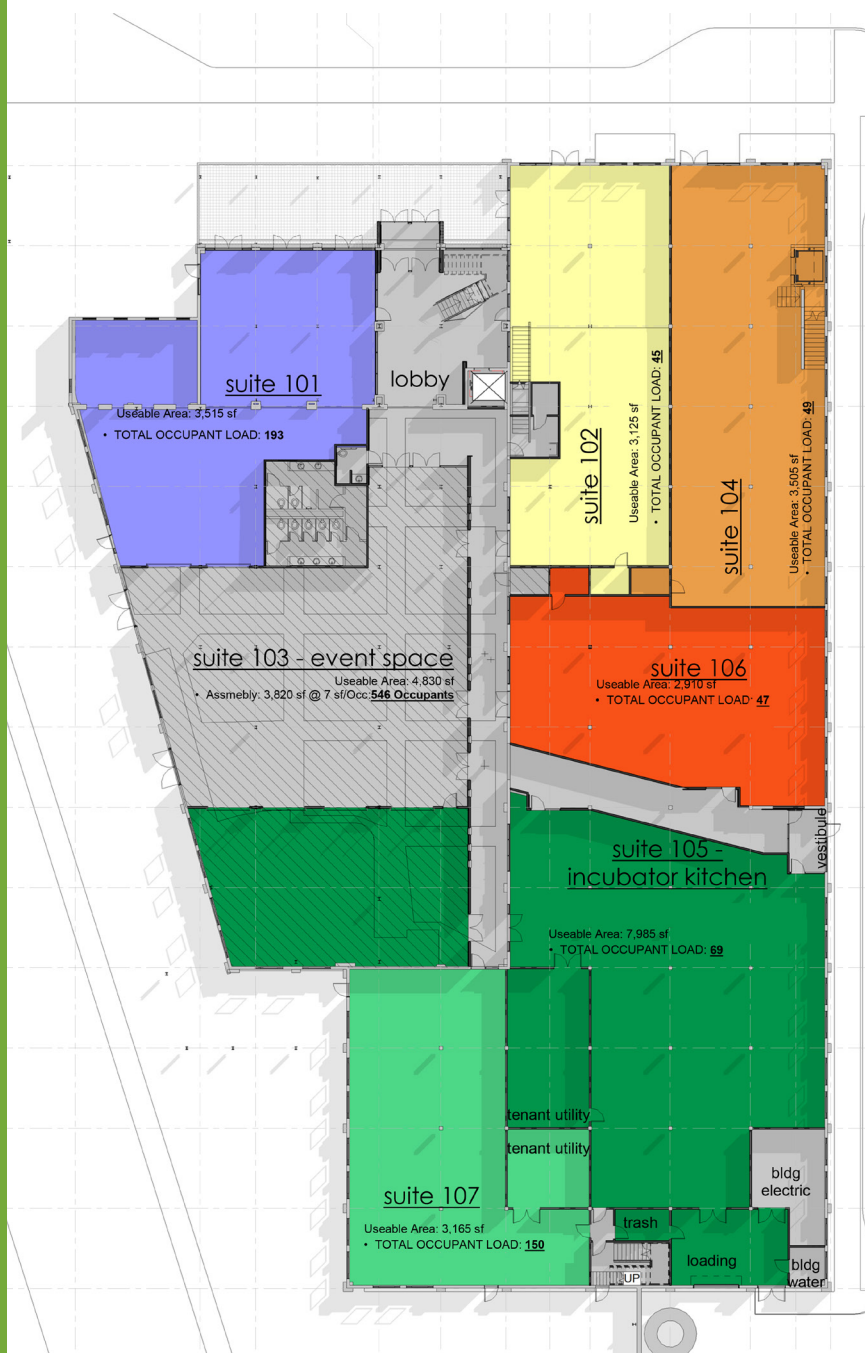
The innovative approach to a fresh foods marketplace will support area farms and increase the community's access to year-round produce that is fresh and locally sourced. A weekly farmer's market, on-site take out, and full meals will be produced directly by the food businesses in the Shared Use Commercial Kitchen. The goal is for a wide array of food products to showcase the food production talents of the Eastern Shore.

Public Events Space

The Packing House two story atrium space opens on to Cannery Park and offers a wide range of public programming and event options in affordable space; catering kitchen on premises. Capacity - 540 guests.

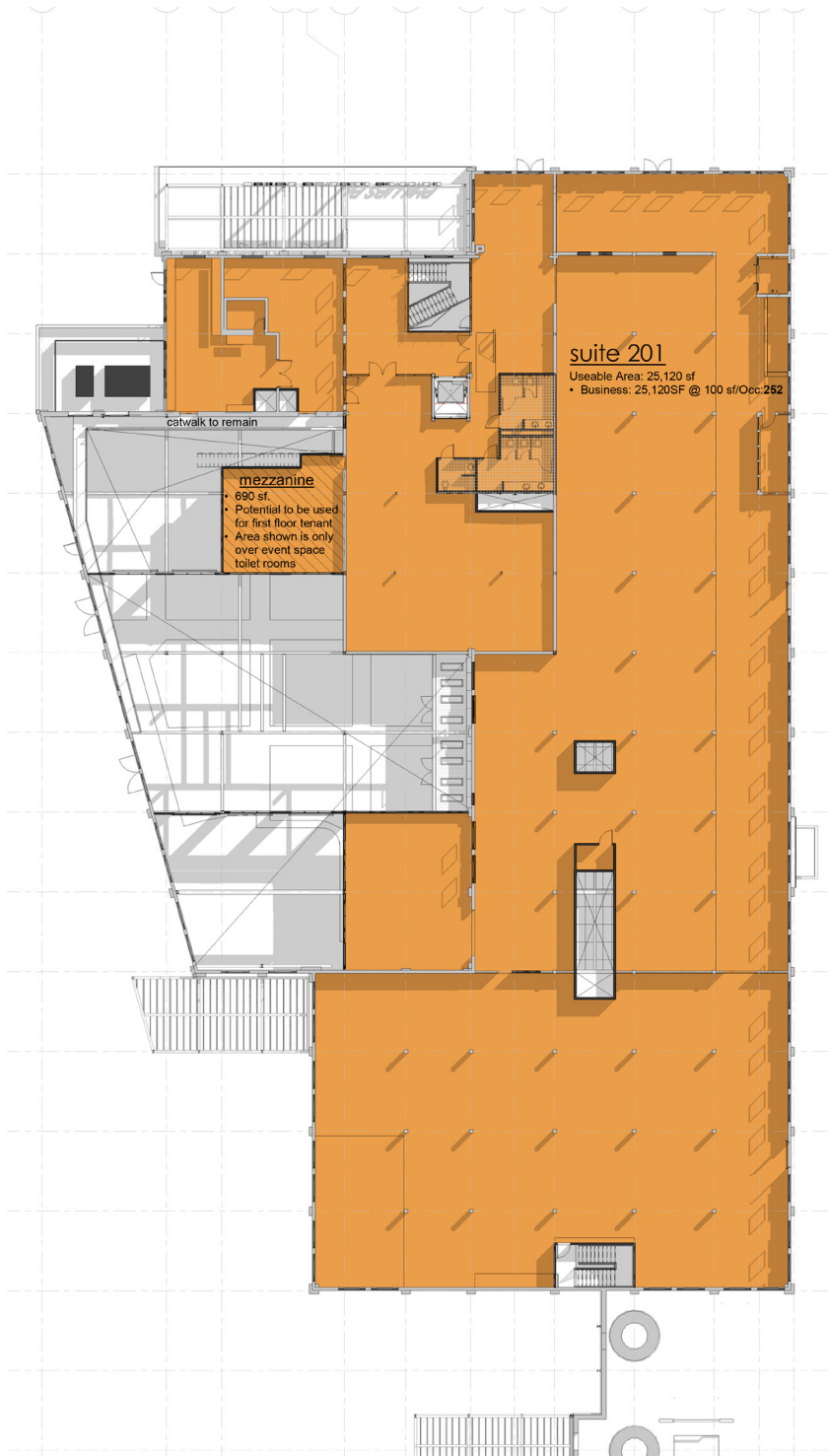
LOWER LEVEL

Gross Square Footage: 34,015 SF



SECOND LEVEL

Gross Square Footage: 25,550 SF



Shared Office / Lab Space Innovation Hub

The second floor of the Packing House will house an innovation hub that will include co-working space, an agtech accelerator, and programming in collaboration with the University of Maryland and national institutions focusing on food production and health. The focus will be on commercialization, business growth and education, bringing together Eastern Shore farmers and watermen, researchers and start-ups, and businesses and individuals from outside the region connected to these sectors. The planned operator of the innovation hub, the Eastern Shore Entrepreneurship Center (ESEC), has created small co-working spaces throughout this rural region and has already launched the agtech accelerator. The Packing House represents a singular opportunity for expanding and maturing its programming.